



PORT AUTONOME DE KRIBI
PORT AUTHORITY OF KRIBI



THE PORT AUTHORITY OF KRIBI AT

SAGO

2024

Yaoundé, 20 – 26 July 2024



www.pak.cm



PORT AUTHORITY OF KRIBI :

A PRESIDENTIAL VISION



The vision of the President of the Republic, who initiated the project of the Kribi Port Industrial Complex, is rooted in its integrated development and its strategic potential for Cameroon and the Region. The main thrusts of this presidential vision are as follows:

- **Economic development :**
using the port to leverage national economic development by promoting industrial investment and increasing exports.
- **Job creation :**
generating employment opportunities by expanding port industrial and logistics activities.
- **World-class infrastructure:**
investing in modern and state-of-the-art infrastructure to support maritime transport and port operations.
- **Regional hub :**
positioning the Port of Kribi as a strategic hub for regional and international trade by enhancing connectivity with neighbouring countries and facilitating the transit of goods.
- **Sustainable development :**
integrating sustainable and environment-friendly practices throughout the development and operational phase of the Kribi Port Industrial Complex.
- **Promotion of regional integration :**
contributing to regional economic integration by boosting trade and exchange between Central African countries and beyond.

In a nutshell, the President's vision is geared at making the Port of Kribi a powerhouse for Cameroon's sustainable economic growth and strengthening its position as a key stakeholder in regional infrastructural and industrial development.

INTRODUCTORY REMARKS



Ladies and gentlemen,

It is with utmost pleasure that we present to you our participation at the Exhibition on Government Action (SAGO). This event is of utmost importance this year, marked by the recent publication of the World Ports Ranking by the World Bank and by the publication of the financial statements, which attest to PAK's profitable performance.

The Port Authority of Kribi stems from the ambitious vision driven by His Excellency Mr Paul BIYA, President of the Republic. His determination to making Cameroon a benchmark logistics hub in Central Africa is now reflected in our Port's outstanding performance. We must keep up the good work by remaining faithful to this vision and continuing to innovate for the future.

Over the years, the Port Authority of Kribi has become one of the most competitive and innovative port infrastructure. Our inclusion in the World Bank's ranking does not only confirm our ongoing commitment to excellence, but also our increasingly significant role in regional and international economic development.

Our profitable financial results are the fruit of a rigorous strategy focused on optimising port operations, continuously enhancing services and investing in state-of-the-art infrastructure. This success also reflects the synergy and fruitful collaboration between our teams, business partners and government authorities.

By participating in SAGO, we are reiterating our commitment to supporting Government action and contributing to Cameroon's economic growth and sustainable development. We are seizing this opportunity to share our achievements, our future projects and to strengthen our existing partnerships while forging new ones.

I would like to express my gratitude to all those who have contributed to this success and to those who will continue to build a prosperous future for the Port Authority of Kribi. Together, we are convinced that every challenge is an opportunity for growth and innovation. Together, let us continue to build a prosperous future for the Port Authority of Kribi and for our nation.

Patrice MELOM
General Manager of PAK

THE PORT AUTHORITY OF KRIBI



The Port Authority of Kribi (PAK) is a public limited Cameroonian company established by Decree No. 99/132 of 15 June 1999 and reorganised by two Decrees of 5 May 2020. It has been developing the huge Port Industrial Complex project initiated by the President of the Republic, which aims at building a modern port infrastructure and establishing an adjoining industrial zone to boost regional trade and industrialisation. It is a paradigm of economic development and infrastructure in sub-Saharan Africa. It has four integrated components:

- **The Port of Kribi with its Multi-purpose Terminal, Container Terminal and Oil Terminal;**
- **Industrial and logistics zones;**
- **The multimodal corridor;**
- **The new town.**

The Kribi Port component has been completed and the port has been operational since March 2018. The Port Authority of Kribi has been operating and promoting the Port of Kribi, a Deep-sea port located in Kribi, a coastal town in the South Region of Cameroon. It began its operations in 2018 and is set to become a logistics and industrial hub in Central and West Africa.

The Port of Kribi has modern infrastructure and can accommodate large vessels, making it a strategic point for international trade. The Port of Kribi has several terminals such as a Container Terminal, and a Multi-purpose Terminal. A new Container Terminal is under construction as part of Phase 2 of the port infrastructure development to increase its capacity. The Port of Kribi plays a key role in Cameroon's economic development by boosting trade and attracting foreign investment.

It is a huge regional development project, including the industrial zones and transport infrastructure such as roads and railways, aimed at enhancing connectivity and boosting regional economic growth.

The Port Authority of Kribi is out to market itself at the Government Action Fair (SAGO) as the Fair is a major event because of its key role in promoting and disseminating Government initiatives, policies and innovations. This is the reason for PAK's participation in SAGO.



PORT AUTHORITY OF KRIBI : AT THE GOVERNMENT ACTION FAIR



The Port Authority of Kribi (PAK), began its commercial activities six years ago, with outstanding economic, commercial and financial results. PAK is taking part in the Government Action Fair, for the second time, with specific objectives:

- **Visibility and reputation**
Increasing the port's visibility and reputation with the public and economic operators.
- **Promotion of port infrastructure**
Presenting port facilities and capacities to attract business investors and partners.
- **Networking and partnerships**
Establishing contacts with other companies and institutions attending the event, thereby fostering opportunities for partnerships and collaboration.
- **Promotion of achievements and performance**
Highlighting the economic, commercial and financial success achieved since the start of operations, showing the positive impact of PAK on the regional and national economy.
- **Consolidation of Government relations**
Consolidating ties with Government authorities and policy makers to obtain support and funding.
- **Presentation of future projects**
Unveiling PAK's future development and expansion projects, such as enhancing infrastructure and initiatives to increase operational capacity and efficiency.
- **Sharing of experience**
Participating in discussions and workshops to share experience and best practices with other participants and industry experts.

These objectives are geared at boosting the visibility of the Port Authority of Kribi, attracting new investment and consolidating its role in the economic development of Cameroon and the Sub-region.

PORT AUTHORITY OF KRIBI : rich and varied activities



For this 2024 edition of SAGO, PAK has planned several large-scale events on its 50 m2 stand. These include:

A dozen themed workshops on the following topics:

- Its missions, values, business performance and assets;
- Port professions, employment prospects and self-employment;
- Its contribution to economic growth and improving the living standards of citizens;
- Challenges and prospects of maritime transport, port logistics and international trade, in general.

A plethora of interactive activities such as immersive video experiences, meetings with the media and competitions.

To achieve this, half a dozen of operational departments supported by external experts will be involved.

PORT AUTHORITY OF KRIBI : MAJOR ACHIEVEMENTS



INFRASTRUCTURE

Its quay is 615 metres long and -16 metres deep, enabling large-capacity ships to dock. Modern cargo-handling equipment have been set up at the port, including STS cranes and RTGs.

In view of the launching of mining activities at Ngovayang by CAMINA, the Port Authority of Kribi has already developed a site that can accommodate 1 million tonnes of iron ore as from 2024.



MINING

To carry out its missions, the Port Authority of Kribi has recruited private operators with internationally recognised reputation and expertise. They include:

- **Kribi Container Terminal (KCT)** : operating the Container Terminal;
- **Kribi Multipurpose Terminal (KMT)** : operating the Multi-purpose Terminal;
- **TransAtlantic S.A (TSA)** : scanning goods;
- **Smit-Lamnalco (SL)** : towing and mooring.



INDUSTRIAL ZONES

PAK has been developing a 1,500-hectare Integrated Industrial Zone adjacent to the port, which attracts investors from different fields such as food processing, petrochemicals, timber and other manufacturing industries.

A 15,000-hectare land allocated to the Port Authority of Kribi by the Government is being developed with partners such as Tanger Med for an amount of more than 500 billion CFA francs. The Kribi Port Industrial Zone will generate 50,000 direct jobs.



PERFORMANCE AND COMPETITIVENESS

There is a growing increase in the volume of containers and goods handled each year at the Port of Kribi, thereby strengthening its position as a regional logistic port hub.



CERTIFICATION AND STANDARDS

The Port Authority of Kribi has obtained international certifications in Quality Management and Safety



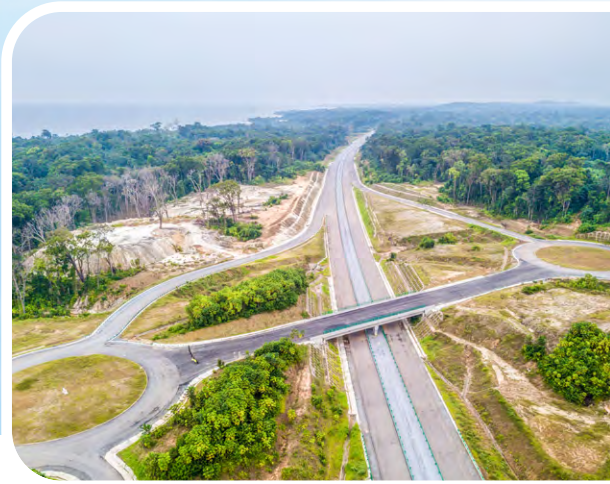
FACILITATION OF REGIONAL TRADE

The Port of Kribi plays a key role in facilitating trade for landlocked countries such as Chad and the Central African Republic.



LOGISTICS CORRIDOR

To ease access to the Port of Kribi, a modern 4-lane highway links the Port of Kribi to the Kribi-Edéa stretch. A 35km tarred road under construction linking Kribi to the Port at Mboro directly.



KRIBI SOCIO-ECONOMIC SUPPORT PROGRAMME

This is an initiative of the Port Authority of Kribi aimed at supporting the socio-economic development of Kribi. This programme includes:

- **Training and employment**
- **Support for entrepreneurs**
- **Support for enhancing basic infrastructure**
- **Environmental protection and sustainable development**
- **Health and education.**



PORT AUTHORITY OF KRIBI: THE PROJECTS



Extension

To increase the Port's capacity to accommodate vessels, a second Container Terminal is currently being built and will be delivered by the end of 2024.

Logistics corridor

Enhancing land transport infrastructure, such as roads and railways, linking the port to the main economic zones of Cameroon and neighbouring countries will accelerate the port's connectivity. Projects announced or underway include:

- *The Ebolowa - Akom II - Kribi ;*
- *The Ebolowa – Efulan - Lolodorf - Kribi road, -which is already under construction and for which the last commercial contract for the Ebolowa - Efulan - Mbangou road was recently signed;*
- *The Edéa - Kribi road;*
- *The Edéa - Kribi railway.*

Construction of the mineral terminal

The construction project of a Mineral Terminal at the Kribi Port entails building two 350-metre quays each capable of handling more than 100 million tonnes of goods per year.

The construction of a railway from Avima (in North-West of Congo-Brazzaville) to Kribi is also planned to ease mineral exports. The cost of investment for the Mineral Terminal is estimated at 1,568 billion CFAF.

Maritime feeder between Kribi and Douala

The Port Authority of Kribi (PAK) and the Port Authority of Douala (PAD) signed a partnership agreement aimed at boosting their competitiveness and coordinating their efforts. This partnership includes setting up a maritime feeder line between Kribi and Douala.

Development of an Economic Zone

PAK has been developing an economic zone to attract investments and boost economic activity in the region.

SUSTAINABLE DEVELOPMENT AT PORT AUTHORITY OF KRIBI

The Port Authority of Kribi has implemented several environmental and social policies to sustainably manage its activities.

Waste management

Putting in place waste management systems to mitigate environmental impact.

Preservation of biodiversity

Implementing measures to protect local ecosystems and endangered species.

Social responsibility

Carrying out initiatives to support local communities through education, health and economic development programmes via the Kribi Socio-Economic Support Programme (PASEK).

Maritime safety

Following strict standards to ensure the safety of maritime operations and reduce environmental risks.

These policies are key to ensuring environmental sustainability and social development while enhancing the port's economic activities.

PORT AUTHORITY OF KRIBI :

INNOVATION AND TECHNOLOGY



From the onset, the Port Authority of Kribi (PAK) has been permanently committed to searching for innovative and relevant technological solutions to its port challenges and issues.

By opting for an all-digital approach, PAK has based the management of its operational activities on a digital architecture built around 3 main tools:

- **PMIS (Port Management Information System), which automatically manages port and logistics operations;**
- **ERP (Enterprise Resource Planning), which is an integrated management software solution that harmonises all the company's administrative and financial activities;**
- **GIS (Geographic Information System), which offers a wide range of database possibilities (such as queries and statistical analysis) through a unique visualisation and geographical analysis for maps.**

This digital architecture is thus at the core of PAK's technological advancements, contributing not only to operational efficiency, but also to consolidating its position as a model, in terms of digitisation among the ports on the Atlantic coast of the Gulf of Guinea.

Ultimately, this technology will enable the Port Authority of Kribi to operate efficiently and safely, facilitating trade and boosting regional economic development.

PARTNERSHIP AND COOPERATION



The Port Authority of Kribi (PAK) plays a strategic role in the economic development of the region and of the country. To maximise its impact, it collaborates with various public and private institutions, especially in the port sector.

Collaboration with other ports

PAK collaborates with other national and international ports to share best practices, optimise port operations and build synergies for greater impact. These partnerships may include twinning arrangements, staff exchanges and joint training programmes. The HAROPA Port, the Port Authority of Douala, the Port Management Association of West and Central Africa (PMAWCA) are partners of the Port Authority of Kribi.

Partnerships with private companies

Many national and international private companies are involved in PAK's operations. These partnerships cover various aspects such as cargo handling, logistics services, and port infrastructure. Companies such as SMIT LAMNALCO, CHEC, KCT, KMT, Africa Global Logistics, are actively involved in the management and development of the Port of Kribi.

Cooperation with financial institutions

The development and expansion of PAK requires huge investment. PAK is working with banks and financial institutions to raise the necessary funds. This may include loans, public-private funding and grants. The 2FIP initiative, a financial initiative, has therefore been set up to support companies wishing to invest in the Kribi Port Integrated

Industrial Zone.

Collaboration with government agencies

PAK works closely with various institutions, including the Ministry of Transport, its supervisory body; the National Port Authority, the regulator; the National Shippers' Council; the Directorate General of Customs and other public bodies. These collaborations are key to ensuring efficient management that complies with national and international regulations.

Educational and training partnerships

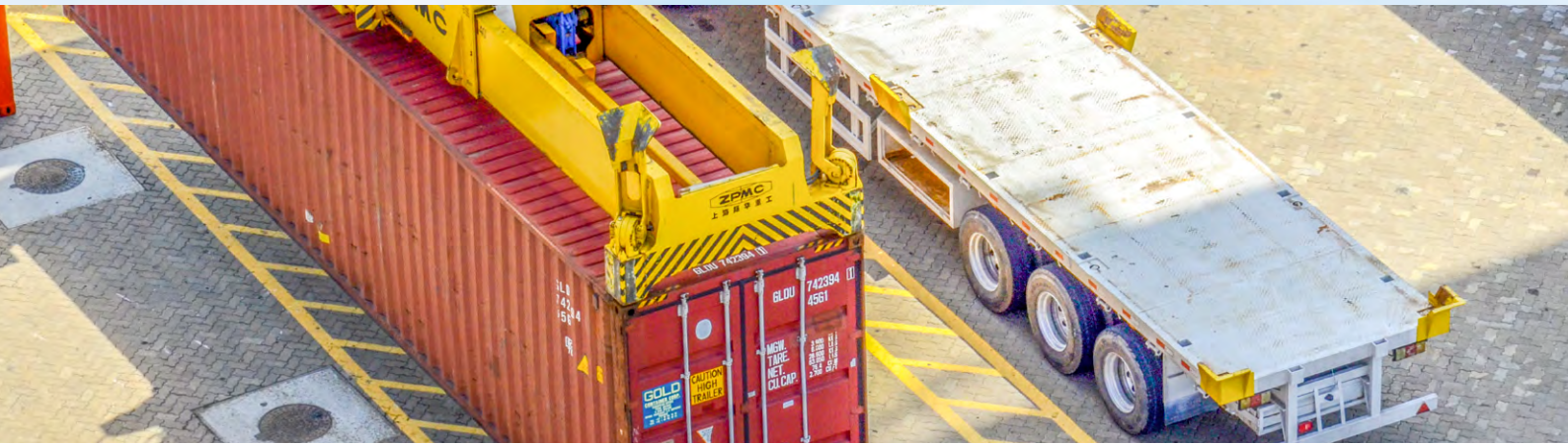
PAK partners with academic institutions and training centres to enhance its staff's skills. This includes furthering studies, internships and collaboration on research projects.

Sustainable development projects

PAK also works with Non-governmental Organisations (NGOs) and international institutions to promote sustainable practices. These collaborations focus on protecting the marine environment, reducing carbon footprint and promoting environmental-friendly initiatives.



PORT AUTHORITY OF KRIBI : IMPACT OF THE BUSINESS



PAK's activities have significant economic and social benefits:

Growth in international trade

Being a deep-sea Port, the Port of Kribi accommodates large commercial vessels, which facilitates the large-scale transport of goods. It serves as a hub for trade between Central Africa and the rest of the world, thereby increasing exports and imports.

Job creation

Port activities create several direct jobs (dockers, port operators) and indirect jobs (transport and logistics services).

Partnerships with international companies enhance training and the transfer of local skills.

Infrastructural development

Investing in port infrastructure builds logistics and storage capacity. Modernising port facilities encourages other sectors to invest in the Region, thereby boosting the national economy.

Increase in tax revenue

Port activities increase tax revenues for the Government through tax and customs duties.

For illustration purposes, in 2023, the Port of Kribi recorded 468 port calls, handled 10.8 million tonnes of goods and collected 213 billion CFAF in customs revenue.

Multiplier effect on the local economy

Port economic activities promote local businesses, such as service providers, transporters and shops, thereby increasing local income and consumption.

Improved social infrastructure

Partners' investments include social support for the construction of schools, health centres and other community infrastructure. In addition, Corporate Social Responsibility (CSR) programmes improve

the well-being of local communities.

Education and training

Partnerships established with some institutions include education and training programmes for youth, thereby increasing their employability. In the same light, the transfer of technology and skills improves the qualifications of local workers.

Better standards of living

Job creation and higher household incomes improve the living standards of families. Access to better services and infrastructure improves living conditions for local communities.

Involvement of local communities

Partnerships and CSR encourage the participation of local communities in developing the port, thereby strengthening their sense of belonging and responsibility.

Poverty reduction

Increased employment opportunities and incomes help to reduce poverty in Kribi, thereby leading to more balanced socio-economic development.

In a nutshell, these activities of the Port Authority of Kribi have huge benefits and promote economic growth and social development in the region and in the country.



PORT AUTHORITY OF KRIBI :

FUTURE PROSPECTS



The Port Authority of Kribi, located in Cameroon, has several future projects and long-term ambitions.

Port expansion and development :

expanding its infrastructure to accommodate a greater volume of maritime traffic, especially by increasing its container handling capacity and modernising its equipment.

Connectivity and logistics :

improving road and railway connections to facilitate the transport of goods between the port and inland areas of Cameroon as well as neighbouring countries.

Regional economic development :

contributing to regional economic growth by attracting investment, creating jobs and boosting international trade..

Environmental sustainability:

integrating sustainable practices into its operations to reduce its environmental footprint and promote responsible management of natural resources.

Strategic positioning:

strengthening its position as a major port hub in Central Africa, to attract more maritime traffic and shipping companies.

These initiatives are geared at making the Port Authority of Kribi a key stakeholder in the economic and logistics development of the region, while ensuring sustainable and responsible growth.



Smart Port, Attractive Business

www.pak.cm